



Panorama

Insights Through Analytics

Panorama is the first library analytics platform that allows you to automate workflows and uncover insights that were never accessible before now.

Learn how Panorama can support your library.





Automate Your Data

Traditional library data analysis is often overwhelming and time consuming. Gathering data from a variety of platforms and manually organizing this information through offline methods such as spreadsheets is unsustainable to support an ever-evolving library.

Panorama automates the pull of data from siloed sources and merges different data sets into one platform. Connect ILS, COUNTER, Authentication, Student Information Systems and more for comprehensive insights.

Library
Collections Data

ILS Data
(including FOLIO)

Library
Services Data

User Behavior &
Outcomes Data

Make Evidence-Based Decisions

Proving the value of your library and its alignment to the institution's mission is paramount for the success of your library. That value needs to come from evidence-based information. With all of your library and user data in one centralized location, your staff will be able to analyze and interpret a number of significant points including:

- ✓ Identify changing trends in usage
- ✓ Spot outliers in e-resource usage
- ✓ Allocate funds by subject area
- ✓ Visualize circulation statistics
- ✓ Manage renewals of library cards

To support new programs or identify items that need to be justified or cut.

Visualize Your Analytics

Panorama offers visual dashboards with advanced filtering that allows you to easily drill down information and uncover trends and insights that could easily be missed.

The screenshot shows a dashboard with several sections: 'Circulation statistics of physical items' with a summary of 2,294 loans and 4,893 renewals; 'Monthly circulation' with a line chart; 'Number of loans per location' with a scatter plot; 'Number of loans by subject area' with a horizontal bar chart; and 'Top 10 most borrowed items' with a list of items and their counts. A filter bar at the top allows for selection of start/end dates, material type, and patron group. Two callout boxes highlight the 'Material type' and 'Patron group' filters.

Start date 3/15/2023 **End date** 3/15/2024 **Material type** Audiobook **Patron group** (All)

Filter my material type and point to audiobook.

Drill down into your different library users.

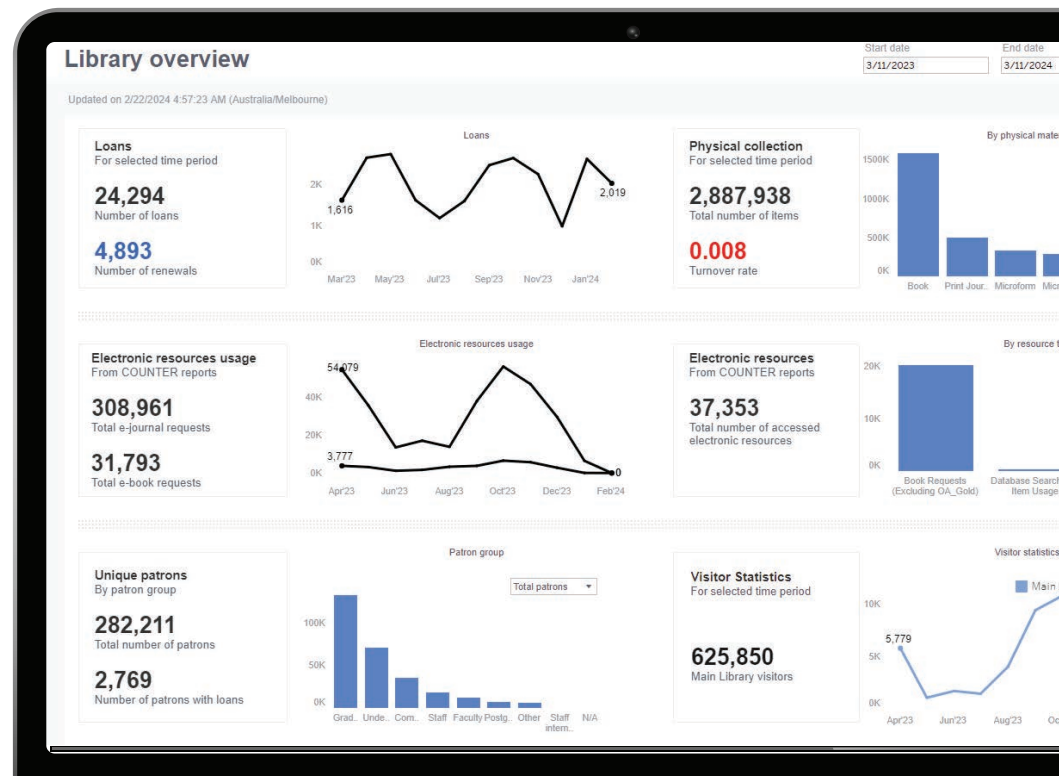
Borrowed item	Total number of borrowed items
MARKERS AND ERASER - MAIN LIBRAR	1,117
PHONE CHARGER - MAIN LIBRARY	891
USB-C CHARGER - MAIN LIBRARY	690
Faculty Kit Cables - DMS	183
SCIENTIFIC CALCULATOR - MAIN LIBRA	92
SCISSORS - MAIN LIBRARY	83
DONGLE, USB-C MULTIPORT ADAPTER	76
Camera battery	76
MAC CHARGER - MAIN LIBRARY	74
CANON POWER ZOOM ADAPTER PZ-E1	67

Understand Your Reach

This dashboard provides a general, high-level view of how the library is doing. It is an entry point to Panorama, allowing users to see an overview of all major library metrics as of that day and navigate to more detailed insights if needed.

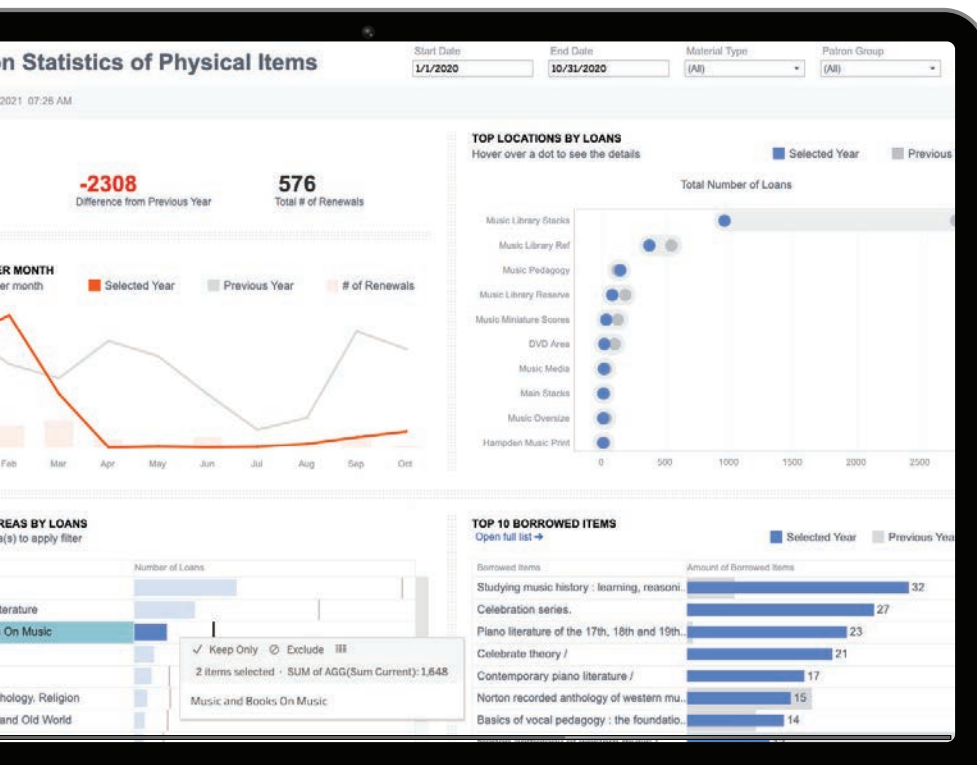
Make evidence-based decisions

- ✓ Tailor acquisitions to align with evolving user demands
- ✓ Ensure your collection remains relevant and utilized
- ✓ Better understand peak usage times
- ✓ Allocate budget based on solid data



Enhance Your ILS

By connecting ILS data to Panorama, your library can achieve a holistic view of user behavior and gain insights into key data, including user demographics, holdings, circulation and acquisitions.



Supported Integrated Library Systems:

- ✓ FOLIO
- ✓ ALMA
- ✓ Sierra
- ✓ WorldShare Management Services (WMS)

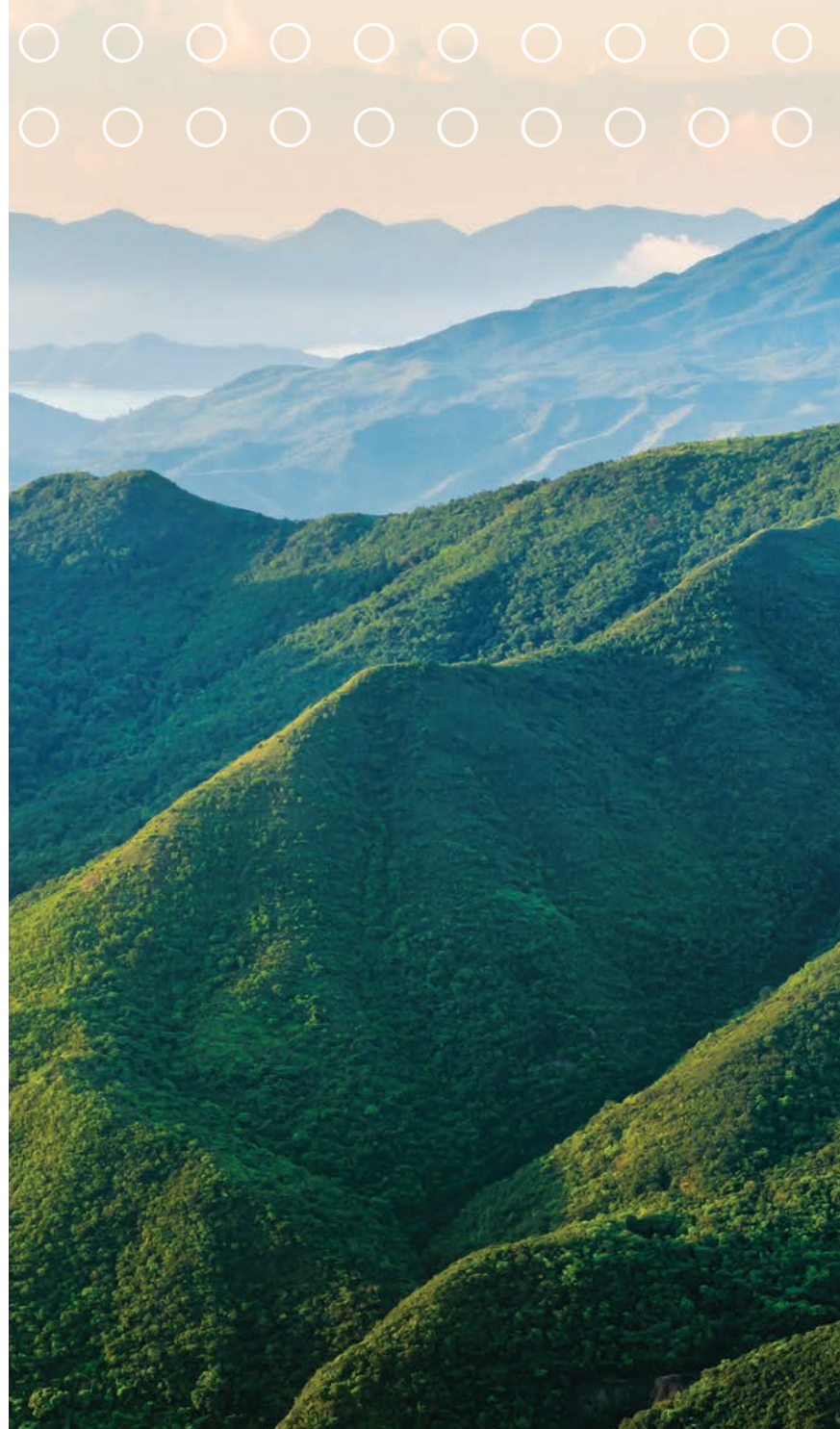
Secure Your Data

Panorama offers a comprehensive strategy to secure library analytics by providing **automatic data feeds** from your sources to the platform. All data is **cloud-hosted** to ensure accuracy and security with your information.

Where is my data stored?

Panorama utilizes cloud technology for data storage, in particular a data lake, which is a scalable repository that holds large volumes of data until required for use. A data lake offers an effective solution that can load and store data very rapidly and securely.

Cloud technology offers scalability, security and reliability, and most importantly, it saves time by eliminating maintenance and any manual processes.



Panorama

Insights Through Analytics

Panorama lets you show your library's true value,
justify your budget and develop the most effective collections.

Request a Demo of Panorama

Request

Or Contact Us to Learn More:

www.ebsco.com/panorama

information@ebsco.com

(800) 653-2726